

I hope this letter finds you well and safe. Your unwavering dedication to our cause has been a beacon of hope, especially in these challenging times. As we navigate the uncertainties of the present, we are reminded of the lasting impact your support has had on empowering individuals with

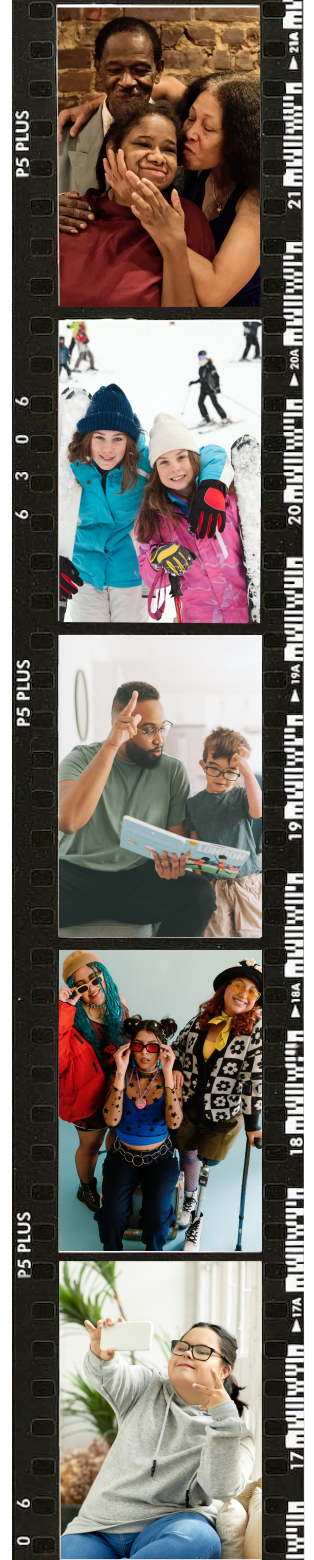


Our goal is to ensure there is adequate funding to provide essential services to **all people with disabilities** in Michigan.

intellectual and developmental disabilities and their loved ones to thrive in inclusive communities throughout Michigan.

Now, more than ever, we find ourselves at a critical juncture where the vital support and services to children, adults and families with disabilities demand our focused attention. Your steadfast commitment to The Arc Michigan has been instrumental in pursuing our shared goals for a more inclusive Michigan, and we are reaching out to you with a renewed sense of urgency.

Your continued support can make our common vision a reality. Even a modest contribution can make a significant difference in our ability to address the pressing issues facing our community. Your generosity allows us to strengthen the foundation for a brighter future.





Because of your support, The Arc Michigan remains steadfast in its commitment to advocacy efforts. Currently, we are advocating to reduce the inherent conflict in the behavioral health delivery system, the low wages of direct care workers and lack of uniformity and equity in the system.

The Arc Michigan is also pushing for increased General Fund dollars to be allocated to the public mental health system. Our goal is to ensure there is adequate funding to provide essential services to all people with disabilities in Michigan.

As we continue these advocacy efforts, **we invite you to join us**. Engage with your state and federal representatives, advocate with and on behalf of people with disabilities, and consider offering your generous financial support to The Arc Michigan.



Donations can be made by visiting www.arcmi.org/donate/. Your support is instrumental in creating more inclusive and independent lives for individuals with disabilities through training, support, public policy, and systems advocacy.

Our strength lies in our partnerships, and we are grateful for your continued collaboration. Together, we can overcome challenges and continue to accomplish great things. Thank you for being an essential part of our mission.

With deepest gratitude,

Sherri Boyd, Executive Director/CEO

Tom Kendziorski, Board President

