

Bureau of Children's Coordinated Health Policy & Supports

June 2024

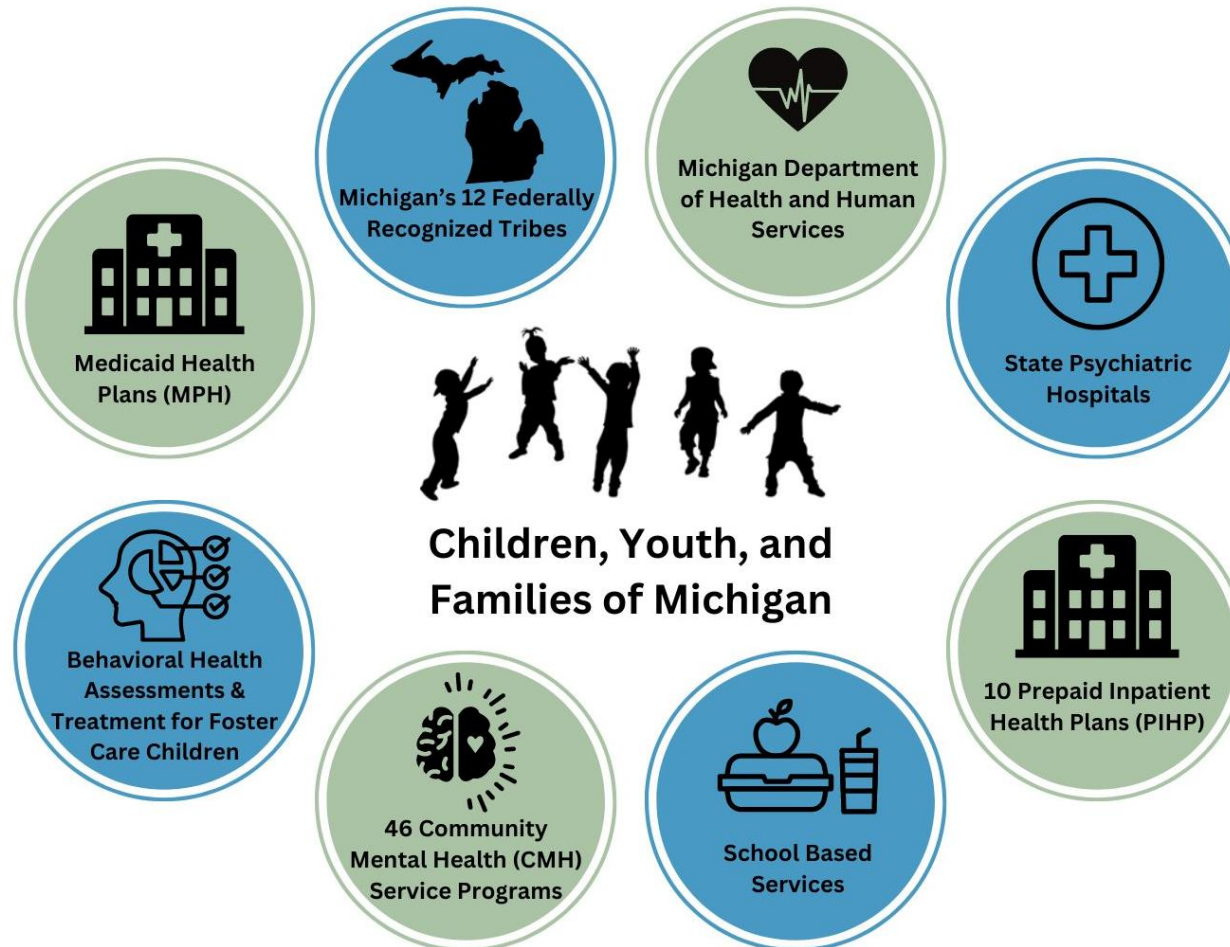


Agenda

- Background
- Bureau Purpose, Divisions & Primary Functions
- Priorities, Projects, and Areas of Focus
- Questions



Current System Overview



Bureau of Children's Coordinated Health Policy & Supports (BCCHPS)



- Builds upon and consolidates the work accomplished over the past 25 years to improve access and provision of children's behavioral health services.
- Proactively restructures how we deliver publicly funded specialty health services to better serve Michigan children, youth and families.
- Recognizes that services must be designed specifically for the needs of children, youth and families.
- Emphasizes critical importance of including family voice in addressing health needs of children and youth.
- Emphasizes critical importance of including family voice in addressing health needs of children and youth.
- Establishes a clinical support team to serve as a statewide resource and provide support to Community Mental Health Service Programs, Prepaid Inpatient Health Plans, behavioral health providers, and other systems partners.
- Works with other MDHHS administrations to address prevention and response to children's behavioral health crises.



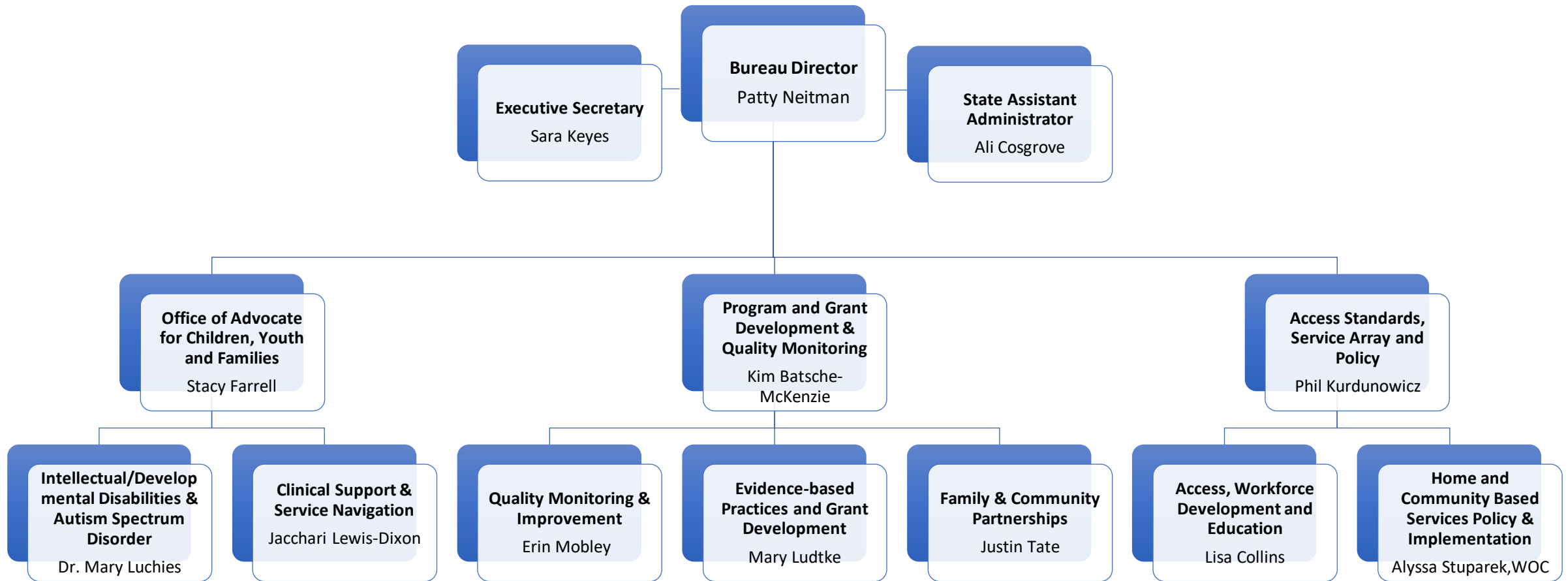
Bureau Divisions & Primary Functions



- **Office of the Advocate for Children, Youth and Families**
 - Develop and implement the Clinical Support and Service Navigation team that provides clinical guidance on the delivery of specialty behavioral health services for children, youth, and families.
 - Support programming and partnerships related to Intellectual/Developmental Disabilities and Autism Spectrum Disorder
- **Program and Grant Development and Quality Monitoring Division**
 - Develop and manage specialized programs, early childhood initiatives, and evidenced based practices for children's behavioral health services based upon the availability of grant funding and other special revenue sources.
 - Maintain a data and quality section for increased transparency and dashboard development.
 - Oversee bureau funding, grants and contracts.
 - Build sustainable relationships with other state agencies that deliver services and oversee child-serving systems.
 - Develop and implement a family-driven, youth-guided approach for partnering with children, youth, and families in the design and implementation of the bureau's programs and services.
- **Division of Access Standards, Service Array, and Policy**
 - Develop and manage Medicaid-funded home and community-based services for children, youth, and families with behavioral health needs.
 - Establish and oversee a standard assessment process and access standards for services.
 - Coordinate education and training programs for children's behavioral health providers.



BCCHPS Org Chart



Office of the Advocate for Children, Youth & Families



Individual and Developmental Disabilities & Autism Spectrum Disorder Services

- Provide support for Autism Council
- Offer Statewide trainings on ASD diagnosis
- Update Medicaid policy to improve Autism service delivery and address barriers to care
- Administer grants for Autism focused organizations
- Partner with other agencies to develop guidance for children with Autism to address identified barriers to care

Clinical Support & Service Navigation

- Clinical Review – Support/Guidance – Urgent/Non-Urgent
- Clinical Consultation and Technical Assistance to CMHSPs
- Inquiry Review
- Transition and Response Review/Reintegration
- Identification of Systemic Challenges/Barriers

Clinical Support & Service Navigation Data

May 2024

Report Date: 06/20/2024

New Requests Received Last Month
(April 2024)

39

New Requests Received This Month
(May 2024)

46*

**Emergent Requests Received
Last Month**
(April 2024)

32

**Emergent Requests Received
This Month**
(May 2024)

44

Total Ongoing Reviews
(June 20, 2024)

257

Reviews Closed This Month
(May 2024)

21**

Youth with Known Adoption or Guardianship History:
(May 2024)

6

Total Requests Received to Date
(June 20, 2024)

821

Program and Grant Development & Quality Monitoring



Data Monitoring & Quality Improvement	Evidence-based Practices & Grant Development	Family & Community Partnerships
<p>Data Analytics: Leading the development of internal and public facing data dashboards. Providing ad hoc data reports to those in the department requiring them, related to Medicaid services provided to children and youth receiving specialty behavioral health services in Michigan.</p> <p>Data Research and Repository: Researching non-traditional medical services covered under Medicaid to better understand which services may be expanded to Michigan citizens.</p> <p>Quality Improvement: Participating in Comprehensive Quality Strategy (CQS), a wide-spread initiative to provide the federal government with information about the approach by which BCCHPS will assess and improve the quality of access, utilization, and effectiveness of behavioral health services provided to youth through Michigan Medicaid.</p>	<p>Funding: Oversee bureau funding, grants, and contracts to support provision of children’s behavioral health services.</p> <p>Evidence-based Practices: Oversee Learning Collaboratives providing training, consultation and technical assistance for implementation of evidence-based practices in local public mental health systems. Examples include:</p> <ul style="list-style-type: none"> • Infant Mental Health Home Visiting • Trauma-focused Cognitive Behavioral Therapy • Parent Management Training-Oregon/Parenting Through Change • Motivational Interviewing • Infant & Early Childhood Mental Health Consultation • Early Childhood Court 	<ul style="list-style-type: none"> • Juvenile Justice initiatives to promote diversion and access to community-based services - Promoting Access and Continuity of Care (PACC) • Cross Systems Collaboration & Learning Events • Project AWARE (Advancing Wellness and Resiliency in Education) • Parent Support Partners/Youth Peer Support • Family Driven Youth Guided Policy, Process, Practice • Harvard Government Performance Lab (GPL) work to meet mental health needs identified in school earlier

Bureau of Children's Coordinated Health Policy & Supports Data Dashboard



Purpose: Increase availability, transparency, and utilization of information and data to support children's specialty behavioral health service expansion and quality improvement efforts.

The dashboard will:

- compile and analyze specialty behavioral health data to best inform system and service changes and improvements.
- provide data images in a user-friendly format to communicate clearly and transparently about how well the system is performing to further improve the lives of Michigan children, youth, and families.



BCCHPS is committed to thinking critically and creatively to ensure youth and family voice, expertise, and perspective is embedded in the work we do.

We welcome thoughts and feedback of providers and those with lived experience. Input may help inform:

- State policy or program changes.
- Best practice to engage with children, families, and providers.
- Guidance for and understanding of service eligibility and access.
- How to strengthen partnerships between children, families, and service providers.

Your help may be requested in a variety of ways: participation in surveys, focus groups, art design, personal stories, advisory committees, etc.

Providing feedback when requested is always optional. If you are interested in offering your viewpoint, please complete [this brief form](#). We will let you know when opportunities become available. Thank you for sharing!



Access Standards, Service Array & Policy



Home & Community Based Services Policy & Implementation

- Oversee Children's Waiver Program and Serious Emotional Disturbance Waiver
- Administer and provide technical assistance on implementation of mobile crisis service expansion
- Work with other MDHHS divisions to support integrated behavioral health policy and services for children and families
- Certify providers for provision of home and community-based services
- Support policy and program oversight of Michigan Intensive Child & Adolescent Services (MICAS)
- Oversight of statewide Wraparound policy and programming


Access, Workforce Development & Education

- Develop and oversee implementation of standardized statewide behavioral health screening tool (MichiCANS); develop and maintain oversight of applicable policy to support MichiCANS
- Support various workforce initiatives focused on expanding behavioral health workforce (internship stipends, student loan repayment)
- Support expansion of providers through development and maintenance of Capacity Building Center

Michigan Intensive Child & Adolescent Service (MICAS) Array

- Intensive Crisis Stabilization Services
- Home-Based Services
- Respite
- Intensive Care Coordination with Wraparound
- Youth Peer Support
- Parent Support Partners





Teaming is an effective vehicle for collaboration on assessment, action planning and decision-making. The MichiCANS can play a critical role in supporting these processes.

Summarizes the Assessment Process

The MichiCANS is intended to be the process by which the assessment information is organized, summarized, used and communicated once it has been collected.

Integrates the Family's Story

The MichiCANS provides a summary of the youth and family's story, and it should be done as an integration of multiple story tellers.

A Shared Vision for Coordinating Care

The consensus-based process of determining action levels on items and prioritizing relevant needs and strengths from which a coordinated plan is developed.

Supports Change Management

Mapping the information from the MichiCANS to the plan facilitates outcomes monitoring and management by all members of the team including the youth and family, allowing for plan adjustment, acknowledgement of accomplishments, and celebrating goals that have been met.

Who is the MichiCANS for and is it required to be completed to access services?



- The MichiCANS screener will be the required tool at the point of access for all infants, toddlers, children, youth, and young adults ages birth through 20 (until the day prior to 21). Information gathered from the MichiCANS screener will provide a recommendation related to potential eligibility for services, help guide initial determination of needs and strengths, and provide information for appropriate referrals for behavioral health services.
- At intake, the MichiCANS comprehensive will be used with all infants, toddlers, young children, youth, and young adults ages birth through 20.
 - DECA will also be used with infants, toddlers and young children ages birth to 6 with SED or SED/IDD
- The MichiCANS comprehensive will help to identify areas of need for each child, youth and young adults' planning process.
- The MichiCANS will be updated annually and when there is a significant change in life circumstances and/or a behavioral health event.
- The MichiCANS may identify the need for additional assessments.

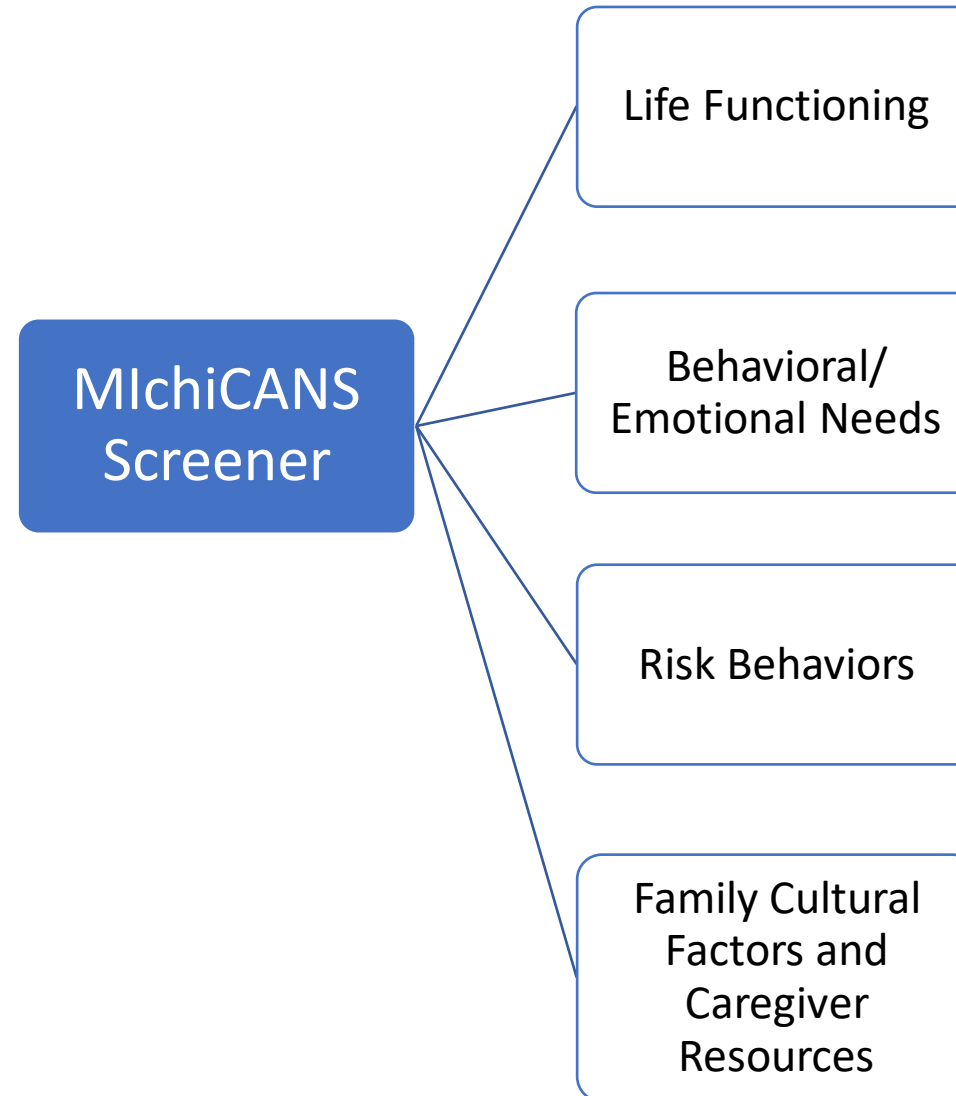
MichiCANS



- Considerations for infants, toddlers, children, youth and young adults with Serious Emotional Disturbances and Intellectual/Developmental Disabilities.
- Will be used to support the identification of functional limitation for both SED and IDD.
 - 1915i, SEDW
- Used up to age 21.
- Support cross system understanding for collaboration.
 - CCBHC
 - CSA
 - SHA
 - PRTF
- Elevates strengths and needs for planning.
- May help with early identification of needs for youth and families and supports crisis prevention.

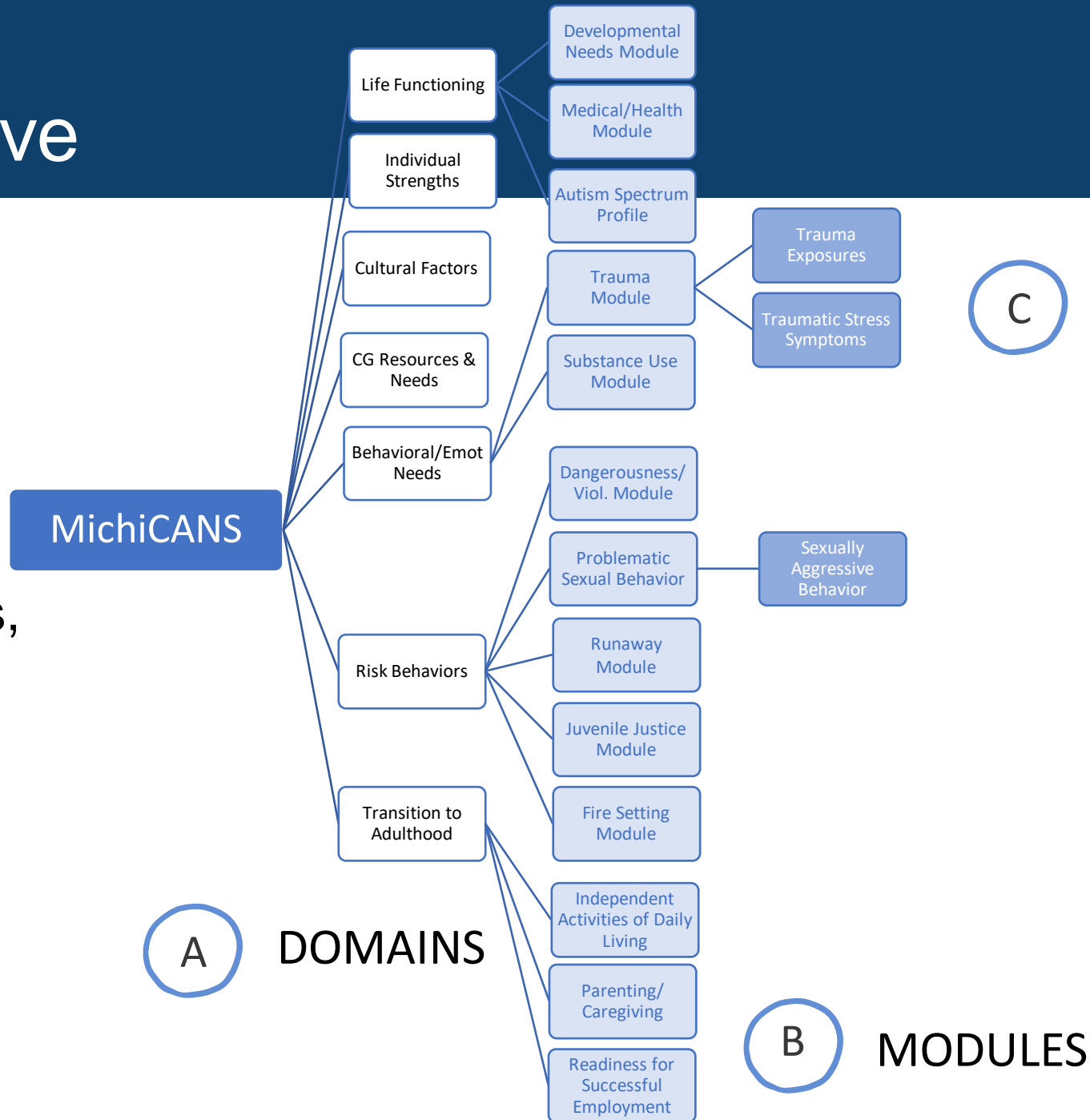
MichiCANS Screener

The MichiCANS Screener will be used at Access Centers as a standard way to guide initial assessment and eligibility determination that guides the level of services children and families will receive, including external behavioral health referrals.



MichiCANS Comprehensive

The MichiCANS Comprehensive will be used by clinical and care coordination service providers (therapists, case managers, wraparound facilitators) to guide initial and ongoing treatment service planning.



More Information

More information related to the original CANS instrument and its development can be located at:

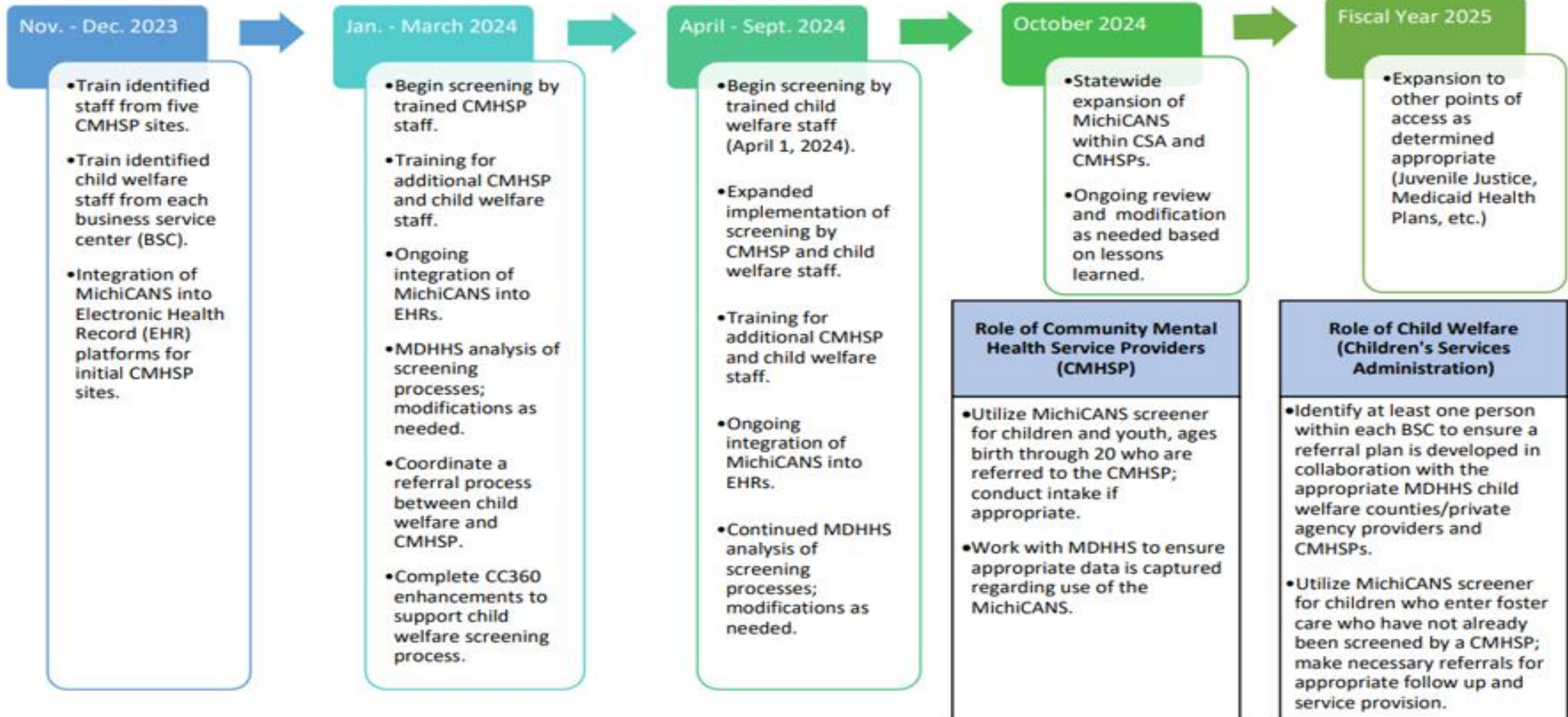
- <https://praedfoundation.org/>
- www.iph.uky.edu

More information about the MichiCANS is available at: [Michigan Child and Adolescent Needs and Strengths - MichiCANS](#)

Any questions or inquiries about MichiCANS or the Soft Launch can be directed to:

- MDHHS-MichiCANS@michigan.gov

MichiCANS Timeline



Workforce Development and Training

Student Loan Repayment Program

- \$4.4m awarded in FY23; \$3m for FY24.

Internship Stipend Program

- \$3.5m to support behavioral health internships.

Capacity Building Center

- Expanded access to training and resources for providers and families.

Questions



BUREAU OF CHILDREN'S COORDINATED HEALTH POLICY & SUPPORTS

Patricia Neitman, Bureau Director

NeitmanP@michigan.gov

Phil Kurdunowicz, Director

Access Standards, Service Array & Policy

KurdunowiczP@michigan.gov

Ali Cosgrove, CosgroveA2@michigan.gov

Kim Batsche-McKenzie, Director

Program and Grant Development & Quality Monitoring

Batsche-MckenzieK@michigan.gov

Stacy Farrell, Director

Office of Advocate for Children, Youth & Families

FarrellS7@michigan.gov